

# LAC2007@TU-Berlin

---

## Qtractor

**An Audio/MIDI multi-track sequencer**

Rui Nuno Capela  
rncbc.org

<http://qtractor.sourceforge.net>

# What is Qtractor ? (1)

---

Yet another Audio/MIDI sequencer ?

Yes ;-)

- Multi-track paradigm
- Linux
- JACK
- ALSA Sequencer
- C++
- Qt
- GPL

# What is Qtractor ? (2)

---

- Home-studio DAW GUI
- Intuitive and easy to use (hopefully)
- Not a tracker
- Music-making playground
- Not for the erudite (no score editor)
- Techno-boy bedroom studio, anyone?
- Not a revolution, will evolve . . .
- Why not Ardour ?

# Who is behind ?

---

**Hobby work of one developer**

- **Me, rncbc a.k.a. Rui Nuno Capela**

**LAD Portfolio**

- **QjackCtl**
- **Qsynth**
- **Qsampler**

**A gift economy player :-)**

# But why ?

---

- **Just for fun**
- **The motive . . .**
  - **Long time enthusiasm on electronic music**
- **The skill . . .**
  - **A half-life on programming (>20y)**
- **The moment . . .**
  - **An extraordinary event alignment occurred in the whole Universe . . .**
- **So that was it !**

# Where can get it ?

---

**cvs.sourceforge.net**

- **Still alpha, but...**
- **Fully functional (no not-implemented-yets)**
- **What You See Is What Is Working**
- **Bugs'R'Us**
- **WIP**

**Open for Business (no money involved)**

- **users, developers, players, nurturers . . .**

# What do I need ?

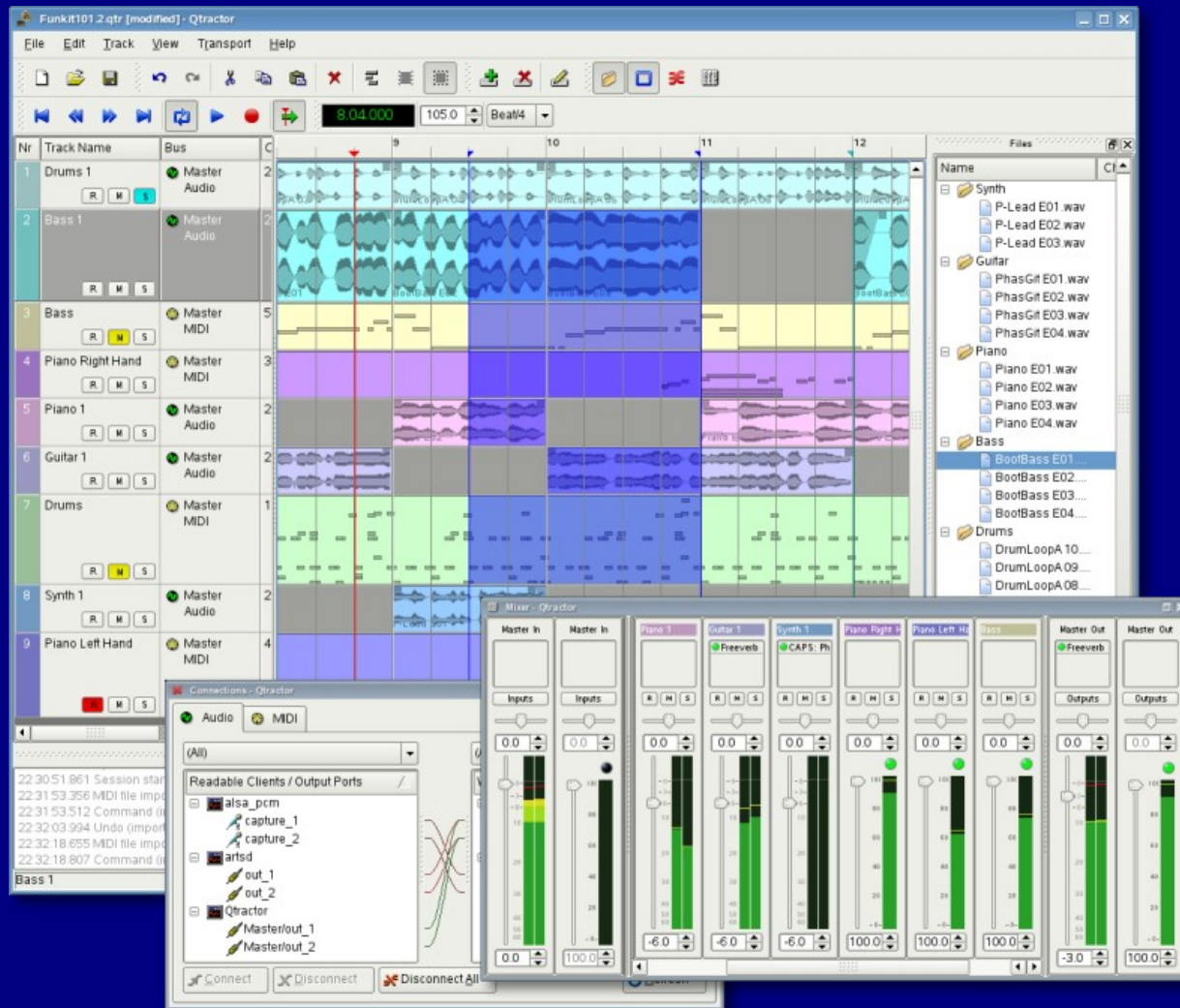
---

## Requirements

- **Mandatory**
  - Qt4 (core, gui, xml)
  - JACK
  - ALSA
  - libsndfile
- **Optional**
  - libvorbis (enc, file)
  - libmad
  - libsamplerate

# Give me figures !

## GUI





# GUI Elements (1)

---

(business as usual)

**Main window**

- **Menu**
- **Tool-bars**
- **Workspace (canvas)**
  - **Track list**
  - **Track view**
- **Status-bar**

# GUI Elements (2)

---

## Tool windows

- **Connections**
- **Mixer**
- **Files**

# GUI Elements (3)

---

## Dialogs (modal)

- **Session properties**
- **Track properties**
- **Bus configuration**
- **Instruments**
- **Options**

# Sessions (1)

---

- **XML encoded file**
  - **Properties**
  - **View state**
  - **Bus configuration**
  - **MIDI Instrument map**
  - **Files**
  - **Tracks**
  - **Clips**

# Sessions (2)

---

- **SDI application**
- **Locked to JACK sample-rate**
  - **Disparate session conversion warning**
  - **Playback conversion via libsamplerate**
- **Constant tempo (BPM)**
  - **No tempo map, yet**

# Files

---

- **File selector / mini-organizer**
- **Hierarchical / tree list**
- **Drag-and-drop enabled**

## **Audio file support**

- **libvorbisfile (ogg)**
- **libsndfile (wav, aiff, flac, au, ...)**
- **libmad (mp3)**

## **MIDI file support**

- **SMF format 0 and 1 (home-brew)**

# Clips (1)

---

- **Elemental items of session arrangement**
- **Whole or part of an audio / MIDI file**
- **Imported / Drag-n-drop into tracks**

## Properties

- **Label (name)**
- **Location (start time)**
- **Offset**
- **Length**
- **Fade-in/out (linear, cubic, quadratic)**

# Clips (2)

---

## Selection (modes)

- **Clip**
- **Range**
- **Rectangular**

## Editing (operations)

- **Cut**
- **Copy**
- **Paste**
- **Delete**
- **Drag / Move**



# Audio Clips

---

## Audio clips

- **Represent the whole or part of**
  - **One audio file**
- **Waveform graphical representation**
  - **Peak and RMS**

# MIDI Clips

---

## MIDI clips

- **Represent the whole or part of**
  - **One MIDI channel (SMF format 0)**
  - **One MIDI track (SMF format 1)**
- **Piano-roll graphical representation**
  - **Note events (pitch, time, duration)**

# Editing

---

- **Non-destructive**
- **All editing operations are parametric (location, offset, length)**
  - **Does not modify audio or MIDI files**
  - **Except: files created on recording**
- **Undo / Redo fully enabled**
- **Zoom and resizing**

# Tracks (1)

---

- **Sequence of overlapping clips**

## **Properties**

- **Name**
- **Type (audio or MIDI)**
- **Input / Output buses**
- **State (record, mute, solo)**
- **Color**

# Tracks (2)

---

## Audio tracks

- Input bus: recording
- Output bus: playback / mix-down

## MIDI tracks

- Channel
- Instrument (bank, program)

## Recording

- Capture audio / MIDI files as new clips

# Audio Engine

---

## JACK client

- **Master thread (JACK callback)**
- **Audio buses (JACK ports)**
- **Audio clips**
  - **One dedicated disk I/O service thread**
  - **Lock-free ring-buffer**
    - **Filled / emptied ~ 1s threshold**
    - **Permanently cached < 4-5 seconds**

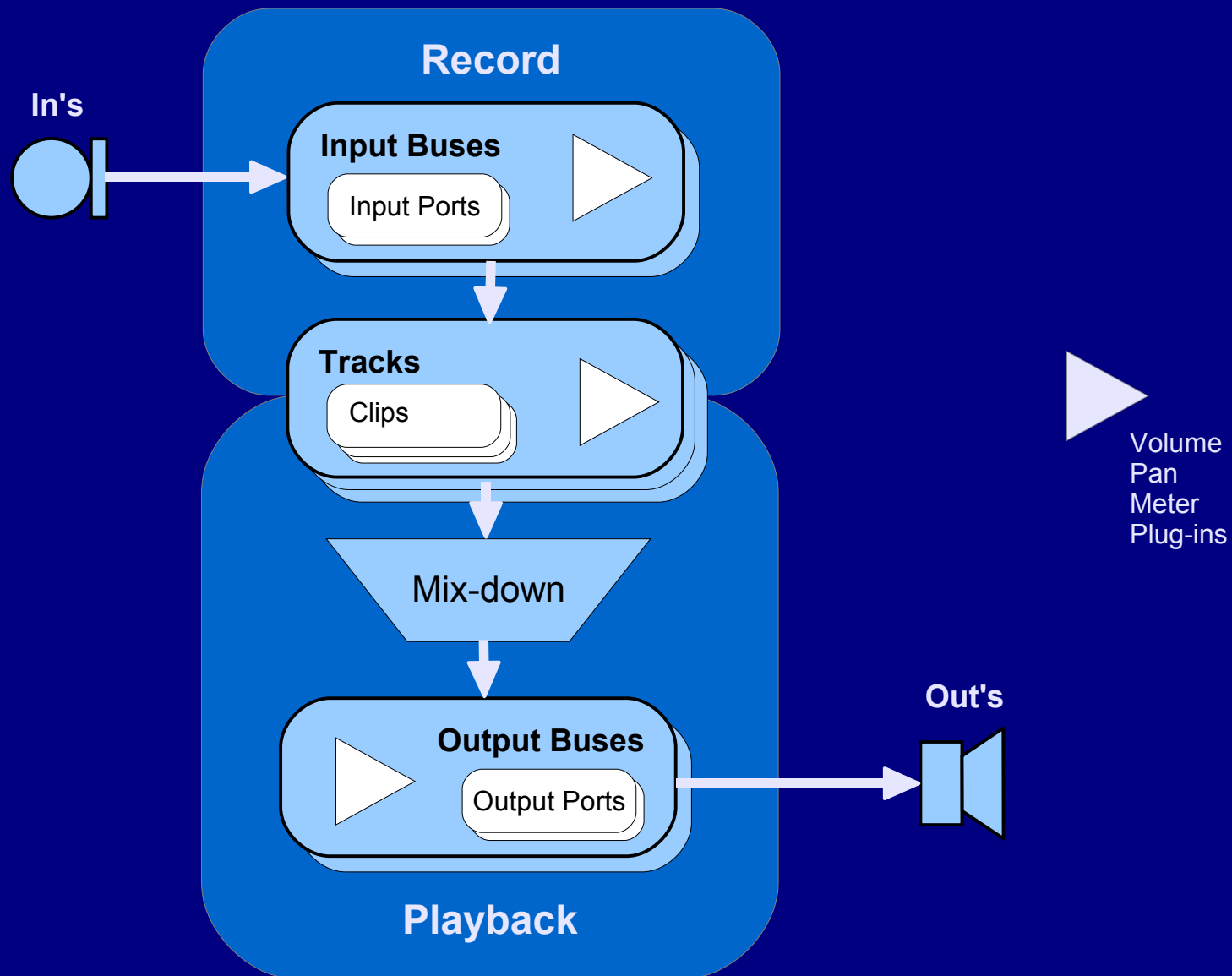
# MIDI Engine

---

## ALSA Sequencer client / queue

- **Slave thread (MIDI output)**
- **Listener thread (MIDI input)**
  - **Inbound events multiplexed to record-armed track clips**
- **MIDI buses (ALSA seq ports)**
- **MIDI clips**
  - **Outbound events scheduled ~ 1 second period**
- **ALSA seq queue / port time-stamping**

# Block Diagram (1)





# Engines & Buses (1)

---

- **Multi-threaded**
  - **1 Audio master thread (JACK process context)**
  - **N Audio ringbuffer-disk I/O threads**
  - **1 MIDI input thread**
  - **1 MIDI output thread**

# Engines & Buses (2)

---

- **Looping (playback)**
  - **Audio clip file-buffer service thread level**
  - **MIDI output thread process level**
- **JACK transport support**
  - **Soft-chase positioning**
  - **Buffer-period resolution**
- **MIDI Machine Control (MMC)**
  - **Transport control (rew, ffw, rec, shuttle, etc.)**
  - **Track arming record, mute, solo\***

# Engines & Buses (3)

---

## Audio Bus-Track channel assignment

- **Input bus**
  - **Determines the number of channels of recorded / captured files**
- **Output bus**
  - **Determines the number of channels on playback / mix-down**
  - **Automatic multi-channel mix-down resolution**

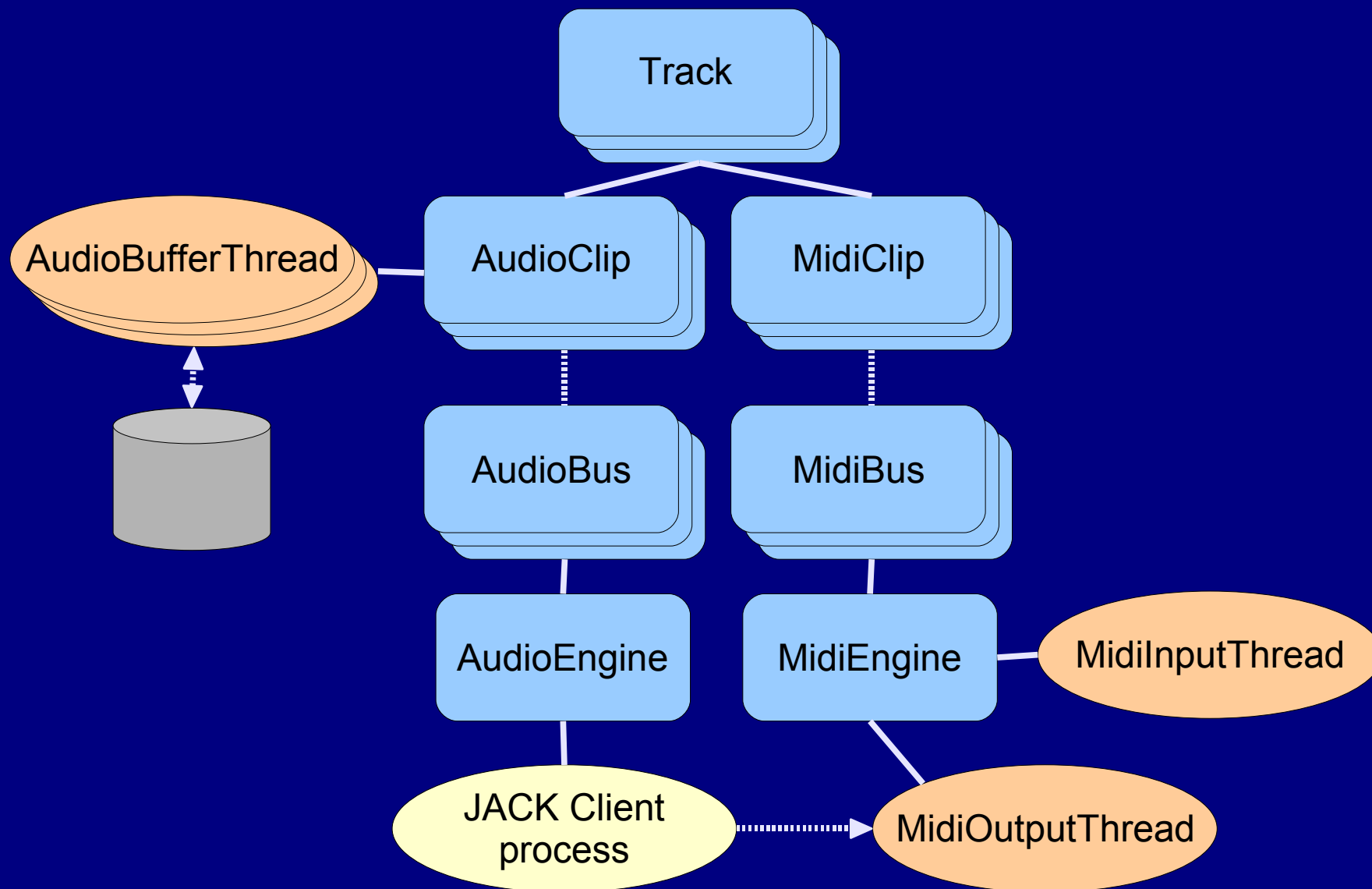
# Engines & Buses (4)

---

## Default “Master” buses

- **Audio**
  - **Stereo (2 channel ports)**
  - **Auto-connected**
- **MIDI**
  - **Single port (16 channels)**
- **All bus ports are accessible for arbitrary connection (patch-bay)**

# Block Diagram (2)



# Mixer

---

- **Session monitoring**
  - **Audio: peak level meters**
  - **MIDI: event activity, note velocity meters**
- **Input / Output bus connection control**
- **Track state control (record, mute, solo)**
- **Mix-down control (pan, volume)**
- **Mixer strips**
  - **Input buses | Tracks | Output buses**
- **Audio strips: plug-in effects chain (LADSPA)**

# Connections

---

## Audio and MIDI patchbay

- QjackCtl technology :-)
- Saved / Restored as session state
- Not restricted to own bus ports

# Audio Plug-ins (LADSPA)

---

- **Seamless plug-in instance aggregation**
- **Plug-in chain**
  - **Select & Edit (dialog)**
  - **Activate**
  - **Move (reordering)**
- **Plug-in dialog**
  - **Real-time parameter control**
  - **Named presets (global)**



# MIDI Instruments

---

- **Cakewalk™ instrument definition files (.ins)**
  - **Convenient MIDI bank-select / program-change instrument mapping per channel**
  - **Human-readable patch and key names**
  - **One instrument map per MIDI bus (16 channels)**

# What's missing ? (1)

---

- **MIDI clip editor**
- **Audio / MIDI file export**
- **Programmed punch-in/out recording**
- **Dynamic curves / Automation (volume, pan, plug-in parameters, controllers)**
- **DSSI, LV2 Plug-ins**
- **JACK-MIDI**
- **Time-stretching / Pitch-shifting**
- **Tempo map**

# What's missing ? (2)

---

- **MIDI Time Code**
- **MIDI Clock**
- **OSC**
- **Integrated scripting (angelscript?)**
  
- **Your suggestions here !**

# Q & A

---

## Qtractor

**An Audio/MIDI multi-track sequencer**

**<http://qtractor.sourceforge.net>**

- **Qtractor is free open-source software; you can redistribute it and / or modify it under the terms of the GNU General Public License version 2 or later.**
- **It is being possible through the knowledgeable, direct and indirect collaborative efforts of the Linux Audio Developers and Users communities.**

**Thank you all.**